



GOT-3156TL-830

**All-in-One
15" XGA TFT Fanless Compact-Size
PANEL PC**

User's Manual



Disclaimers

This manual has been carefully checked and believed to contain accurate information. AXIOMTEK Co., Ltd. assumes no responsibility for any infringements of patents or any third party's rights, and any liability arising from such use.

AXIOMTEK does not warrant or assume any legal liability or responsibility for the accuracy, completeness or usefulness of any information in this document. AXIOMTEK does not make any commitment to update the information in this manual.

AXIOMTEK reserves the right to change or revise this document and/or product at any time without notice.

No part of this document may be reproduced, stored in a retrieval system, or transmitted, in any form or by any means, electronic, mechanical, photocopying, recording, or otherwise, without the prior written permission of AXIOMTEK Co., Ltd.

**©Copyright 2010 AXIOMTEK Co., Ltd.
All Rights Reserved
February 2011, Version A1
Printed in Taiwan**

Safety Approvals

- ◆ CE Marking
- ◆ FCC Class A

◆ FCC Compliance

This equipment has been tested in compliance with the limits for a Class A digital device, pursuant to Part 15 of the FCC Rules. These limits are meant to provide reasonable protection against harmful interference in a residential installation. If not installed and used in accordance with proper instructions, this equipment might generate or radiate radio frequency energy and cause harmful interference to radio communications. However, there is no guarantee that interference will not occur in a particular installation. If this equipment does cause harmful interference to radio or television reception, which can be determined by turning the equipment off and on, the user is encouraged to try to correct the interference by one or more of the following methods:

1. Reorient or relocate the receiving antenna.
2. Increase the separation between the equipment and receiver.
3. Connect the equipment to another outlet of a circuit that doesn't connect with the receiver.
4. Consult the dealer or an experienced radio/TV technician for help.

Shielded interface cables must be used in order to comply with the emission limits.

Safety Precautions

Before getting started, please read the following important safety precautions.

1. The **GOT-3156TL-830** does not come equipped with an operating system. An operating system must be loaded first before installing any software into the computer.
2. Be sure to ground yourself to prevent static charge when installing the internal components. Use a grounding wrist strap and place all electronic components in any static-shielded devices. Most electronic components are sensitive to static electrical charge.
3. Disconnect the power cord from the **GOT-3156TL-830** before any installation. Be sure both the system and external devices are turned OFF. A sudden surge of power could ruin sensitive components that the **GOT-3156TL-830** must be properly grounded.
4. The brightness of the flat panel display will be getting weaker as a result of frequent usage. However, the operating period varies depending on the application environment.
5. Turn OFF the system power before cleaning. Clean the system using a cloth only. Do not spray any liquid cleaner directly onto the screen. The **GOT-3156TL-830** may come with or w/o a touchscreen. Although the touchscreen is chemical resistant, it is recommended that you spray the liquid cleaner on a cloth first before wiping the screen. In case your system comes without the touchscreen, you must follow the same procedure and not spray any cleaner on the flat panel directly.
6. Avoid using sharp objects to operate the touchscreen. Scratches on the touchscreen may cause malfunction or internal failure to the touchscreen.
7. The flat panel display is not susceptible to shock or vibration. When assembling the **GOT-3156TL-830**, make sure it is securely installed.
8. Do not open the system's back cover. If opening the cover for maintenance is a must, only a trained technician is allowed to do so. Integrated circuits on computer boards are sensitive to static electricity. To avoid damaging chips from electrostatic discharge, observe the following precautions:

- Before handling a board or integrated circuit, touch an unpainted portion of the system unit chassis for a few seconds. This will help to discharge any static electricity on your body.
- When handling boards and components, wear a wrist-grounding strap, available from most electronic component stores.

Trademarks Acknowledgments

AXIOMTEK is a trademark of AXIOMTEK Co., Ltd.

IBM, PC/AT, PS/2, VGA are trademarks of International Business Machines Corporation.

Intel[®] and Atom[™] are registered trademarks of Intel Corporation.

MS-DOS, Microsoft C and Quick BASIC are trademarks of Microsoft Corporation.

VIA is a trademark of VIA Technologies, Inc.

SST is a trademark of Silicon Storage Technology, Inc.

UMC is a trademark of United Microelectronics Corporation.

Other brand names and trademarks are the properties and registered brands of their respective owners.

Table of Contents

| | |
|---|-----------|
| Disclaimers | ii |
| Safety Approvals..... | iii |
| Safety Precautions..... | iv |
| CHAPTER 1 INTRODUCTION..... | 1 |
| 1.1 General Description | 1 |
| 1.2 Specifications..... | 3 |
| 1.2.1 Main CPU Board | 3 |
| 1.2.2 I/O System | 3 |
| 1.2.3 System Specification | 4 |
| 1.3 Dimensions | 5 |
| 1.4 I/O Outlets..... | 6 |
| 1.5 Packing List | 7 |
| CHAPTER 2 HARDWARE INSTALLATION | 8 |
| 2.1 Open back cover..... | 8 |
| 2.2 CF card Installation..... | 10 |
| 2.2 Serial Ports Interface | 11 |
| 2.3 Ethernet | 13 |
| 2.4 Mountings: Panel / Wall / Desktop / VESA | 14 |
| 2.4.1 VESA-ARM/Wall-Mount | 14 |
| 2.4.2 Desktop Kit Assembly | 14 |
| 2.4.3 Panel-mount Kit Assembly | 15 |
| 2.5 HDD Installation..... | 16 |
| 2.6 DRAM Installation | 18 |
| 2.7 Wireless LAN Card Installation | 20 |
| 2.8 Power..... | 22 |
| CHAPTER 3 AMI BIOS SETUP UTILITY | 24 |
| 3.1 Starting | 24 |
| 3.2 Navigation Keys..... | 24 |
| 3.3 Main Menu | 25 |
| 3.4 Advanced Menu..... | 26 |
| 3.5 PCI PnP Menu | 39 |
| 3.6 Boot Menu | 42 |
| 3.7 Security Menu..... | 47 |

| | | |
|---|---------------------------------------|-----------|
| 3.8 | Chipset Menu..... | 49 |
| 3.9 | Exit Menu..... | 54 |
| CHAPTER 4 DRIVERS INSTALLATION | | 56 |
| 4.1 | System..... | 56 |
| 4.2 | Touch Screen | 57 |
| 4.2.1 | Specification..... | 57 |
| 4.2.2 | Driver Installation- Windows XP | 57 |
| 4.3 | Embedded O.S. | 60 |
| 4.3.1 | Windows XP Embedded | 60 |

MEMO

CHAPTER 1 INTRODUCTION

This chapter contains general information and detailed specifications of the **GOT-3156TL-830**. Chapter 1 includes the following sections:



- **General Description**
- **Specification**
- **Dimensions**
- **I/O Outlets**
- **Package List**

1.1 General Description

The GOT-3156TL-830 adopts a 15-inch XGA TFT LCD with 400 nits brightness and an Intel® Atom™ processor N270 1.6 GHz to provide excellent computing performance and thermal resistance. This fanless platform is especially designed for operating under heavy-duty environment including steel refinery, oil pipe, ship, machine maker operating systems and many more. Having below abilities makes GOT-3156TL-830 surely a most robust and cost-effective solution.

Wide Operating Temperature Range

GOT-3156TL-830 features a technology of wide operating temperature range which allows it to work between -10°C to +55°C. It incorporates compact ID and fanless cooling system with a low power Intel® Atom™ processor N270 1.6 GHz, making the platform a power-efficient solution.

Reliable and Stable Design

The GOT-3156TL-830 adopts a fan-less cooling system and a CompactFlash™ card, which makes it especially suitable for vibration-heavy environments, best for the transportation, ship, and industrial machinery markets. For high capacity storage requirement, GOT-3156TL-830 can work under 1.3G (5 ~ 500Hz, random for 2.5" HDD) in operation mode with a patent of anti-vibration design. The patent improves the system reliability and sustainability.

WLAN Antenna Supported (optional)

GOT-3156TL-830 has a PCI Express Mini Card slot for optional add-ons such as wireless LAN card for 802.11 b/g connections & 3G/GPRS application, graphics-enhanced video card, universal analog TV/FM tuner/AV capture card, and more. It also provides an optional fixed rotational WLAN antenna for wireless network connection.

More Features

GOT-3156TL-830 utilizes one 200-pin DDR2 533 SODIMM system memory max. up to 2GB, one SATA HDD and one CompactFlash™ slot. It provides over-current protection-fuse and a full set of I/O including 3 RS-232, 1 RS-232/422/485, 4 USB 2.0, 1 audio (line-out), 1 Gigabit Ethernet and 1 VGA. Additionally, this slim unit supports panel mount, wall mount (optional), VESA mount (optional) and desktop stand (optional).

1.2 Specifications

1.2.1 Main CPU Board

- **CPU**
 - Intel® Atom™ N270 1.6GHz processor with FSB 533MHz onboard
- **System Chipset**
 - 945GSE + ICH7M
- **BIOS**
 - America Megatrends BIOS
- **System Memory**
 - One 200-pin DDR2 SO-DIMM socket
 - Maximum memory up to 2GB

1.2.2 I/O System

- **Standard I/O**
 - Three RS-232 and one RS-232/422/485
 - Four USB 2.0
- **Ethernet**
 - One RTL81111b Gigabit Ethernet
- **Audio**
 - One Line-out
- **Expansion**
 - One Mini card
- **Storage**
 - One slot for CF card
 - One SATA
- **Power connector**
 - Phoenix power connector

1.2.3 System Specification

- 15" XGA(1024x768) LCD with LED backlight
- 5 wired resistive Touch
- Fanless Heat Dispensing Design
- IP65 aluminum front bezel
- Disk drive housing:
 - One 2.5" SATA drive
- Net Weight
 - 5.3 Kg (11.68 lb)
- Dimension (Main Body Size)
 - 396mm x 312mm x 65.9mm
- Operation Temperature
 - -10°C to 55°C
- Relative Humidity
 - 10% to 90% @ 40°C, Non-Condensing
- Power input
 - 12/24VDC with phoenix power connector



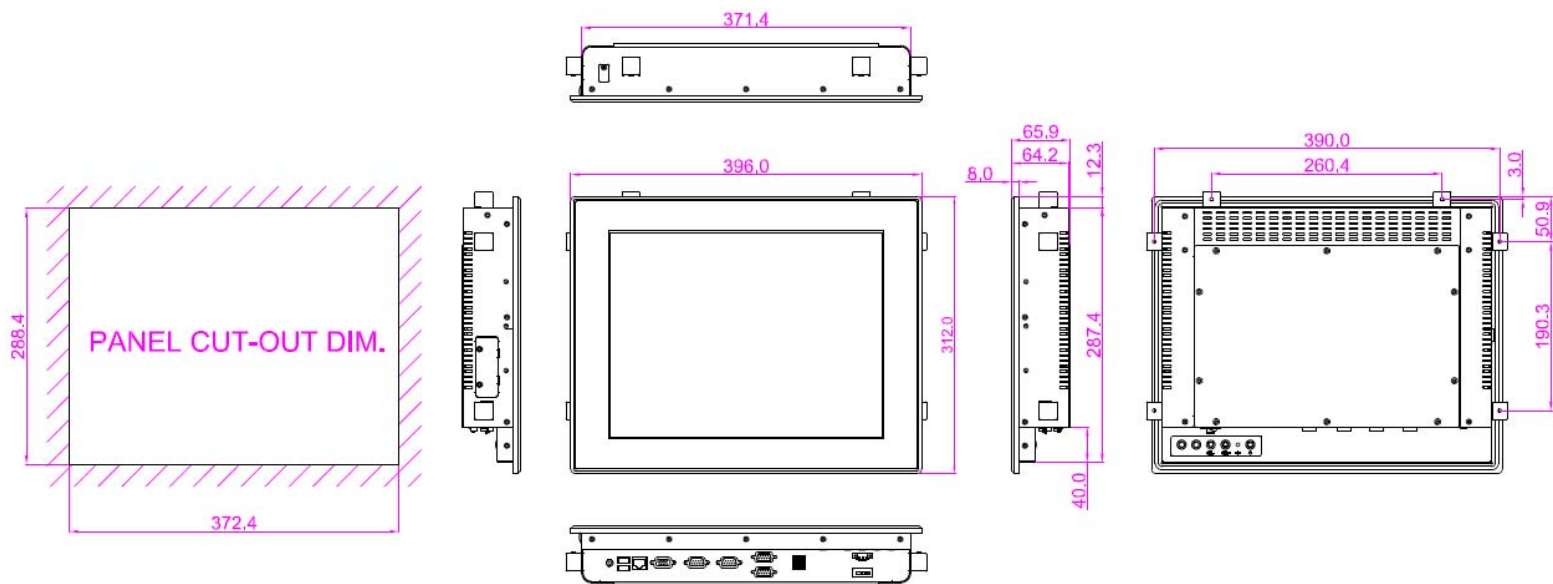
NOTE All specifications and images are subject to change without notice.



NOTE If the operation temperature is higher than 40°C, the wide temperature DRAM is recommended to be used on the device.

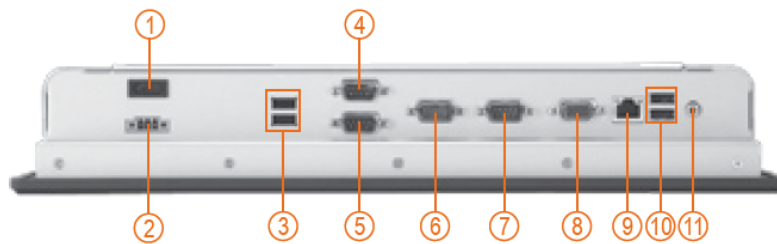
1.3 Dimensions

The following diagrams show the dimensions and outlines of GOT-3156TL-830.



1.4 I/O Outlets

Please refer to the following illustration for I/O locations of the **GOT-3156TL-830**.



| No | Function | No | Function |
|----|--------------------------------------|----|---------------------|
| 1 | POWER SWITCH (ATX) | 7 | COM 2 (RS-232) |
| 2 | Power Input connector (phoenix type) | 8 | VGA |
| 3 | 2 X USB 2.0 | 9 | 1X ETHERNET (RJ-45) |
| 4 | COM 4 (RS-232) | 10 | 2 X USB 2.0 |
| 5 | COM 3 (RS-232) | 11 | AUDIO (LINE-OUT) |
| 6 | COM 1 (RS-232/422/485) | | |

1.5 Packing List

When you receive the **GOT-3156TL-830**, the bundled package should contain the following items:

- GOT-3156TL-830 unit x 1
- Driver CD x1
- Phoenix connector x 1
- Panel mount kit x 6
- Screws for HDD x 4

If you can not find the package or any items are missing, please contact AXIOMTEK distributors immediately.

CHAPTER 2 HARDWARE INSTALLATION

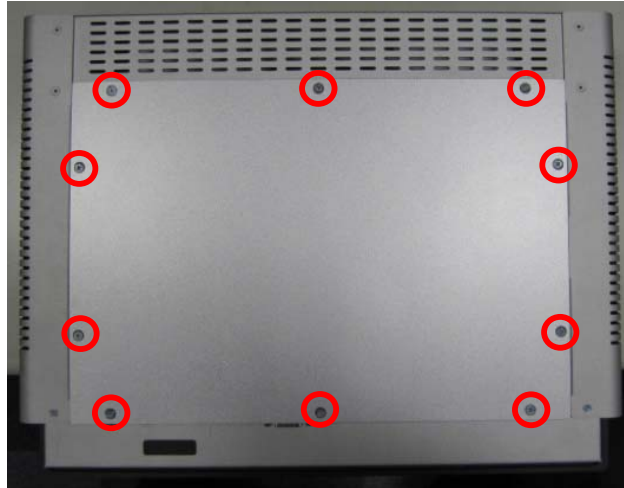
The **GOT-3156TL-830** provides rich I/O ports and flexible expansions for you to meet different demand, for example, CF card. The chapter will show you how to install the hardware. It includes:

- **CompactFlash™ Card**
- **Serial Port**
- **Ethernet**
- **Mounting Method**
- **Hard disk**
- **DRAM**
- **Wireless LAN Card**

2.1 Open back cover

This section tells users how to open back cover. Please follow the steps below.

- Step 1** Unscrew ten screws on the back cover. Please refer the photo below.



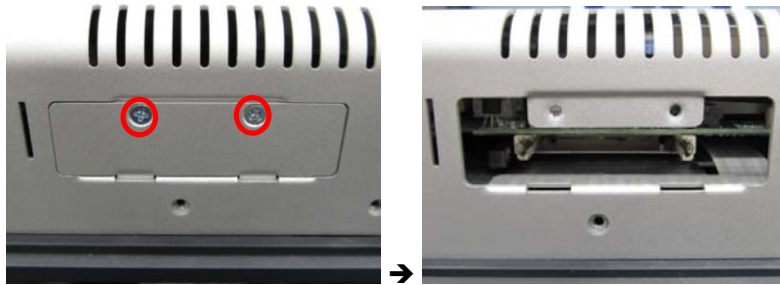
Step 2 Remove the back cover.



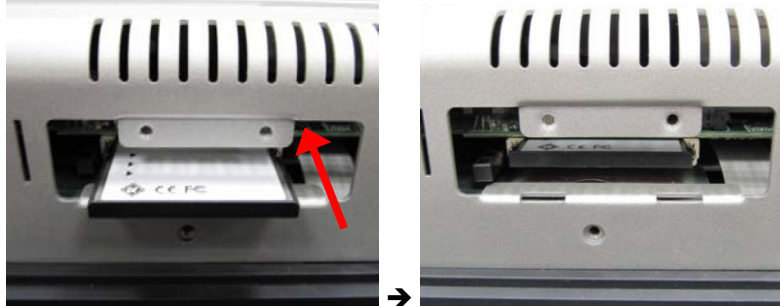
2.2 CF card Installation

The **GOT-3156TL-830** provides one CF slot for users to install CompactFlash™ card. Please refer to the following instructions for installation:

Step 1 Unscrew two screws on the cover of CF card slot on right side of GOT.



Step 2 Insert the card into the socket.



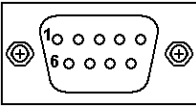
Step 3 Close the cover of CF card slot and fix it. Installation completes.

2.2 Serial Ports Interface

The **GOT-3156TL-830** has four serial ports. COM1 is RS-232/422/485, while COM2, COM3, and COM4 are RS-232.

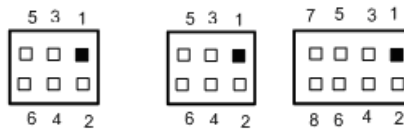
The following table shows you the pin assignments of this connector:

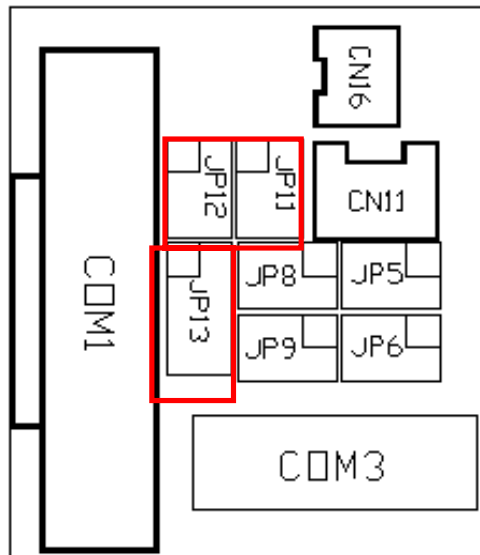
| Pin | Signal | Pin | Signal |
|-----|---------------------------|-----|-----------------------|
| 1 | Data Carrier Detect (DCD) | 6 | Data Set Ready (DSR) |
| 2 | Receive Data (RXD) | 7 | Request To Send (RTS) |
| 3 | Transmit Data (TXD) | 8 | Clear To Send (CTS) |
| 4 | Data Terminal Ready (DTR) | 9 | Ring Indicator (RI) |
| 5 | Ground (GND) | | |



In addition, COM1 can be set for RS-232/422/485 by jumper. The jump setting is listed as below:

| COM1 | JP11 | JP12 | JP13 |
|------------------|----------|----------|----------|
| RS-232 (default) | 3-5, 4-6 | 3-5, 4-6 | 1-2 |
| RS-422 | 1-3, 2-4 | 1-3, 2-4 | 3-4, 7-8 |
| RS-485 | 1-3, 2-4 | 1-3, 2-4 | 5-6, 7-8 |





When COM1 is set to RS-422 or RS-485, the pin assignments are listed below:

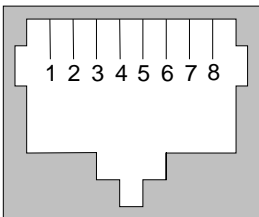
| Pin # | Signal Name | |
|-------|--------------|--------------|
| | RS-422 | RS-485 |
| 1 | TX- | DATA- |
| 2 | TX+ | DATA+ |
| 3 | RX+ | No connector |
| 4 | RX- | No connector |
| 5 | No connector | No connector |
| 6 | No connector | No connector |
| 7 | No connector | No connector |
| 8 | No connector | No connector |
| 9 | GND | GND |

2.3 Ethernet

The **GOT-3156TL-830** is equipped with a high performance Plug and Play Ethernet interface, full compliant with IEEE 802.3 standard, and can be connected with a RJ-45 LAN connector.

Please refer to detailed pin assignment list below:

| Pin | Signal |
|-----|----------------------------------|
| 1 | TX+ (Data transmission positive) |
| 2 | TX- (Data transmission negative) |
| 3 | Rx+(Data reception positive) |
| 4 | RJ45 termination |
| 5 | RJ45 termination |
| 6 | Rx- (Data reception negative) |
| 7 | RJ45 termination |
| 8 | RJ45 termination |



RJ-45

2.4 Mountings: Panel / Wall / Desktop / VESA

There are 4 application options for the GOT-3120T/3128T, Panel/Wall/Desktop/VESA mountings.

2.4.1 VESA-ARM/Wall-Mount

The GOT-3156TL-830 provides two ways for VESA mount: 75x75 mm and 100x100 mm. Screw four screws to fix the kit (optional) in the back chassis.



2.4.2 Desktop Kit Assembly

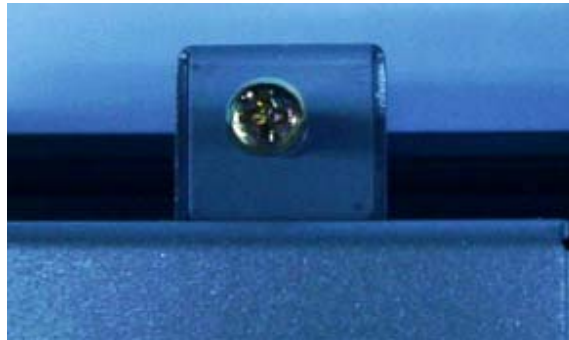
The GOT-3156TL-830 is designed for desktop application. The standard set of desktop kit is included in the system packaging.

Screw 4 screws to fix the kit (Optional) in the side chassis.



2.4.3 Panel-mount Kit Assembly

The GOT-3156TL-830 is designed for panel mount application. To mount the GOT-3156TL-830, the standard set of mounting kit (included in the system packaging) is needed.

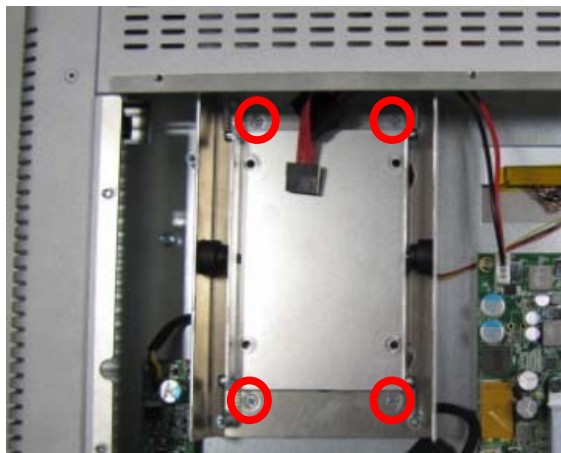


2.5 HDD Installation

The GOT-3156TL-830 provides a convenient Hard Disk Drive (HDD) bracket for users to install 2.5" SATA HDD. Please follow the steps:

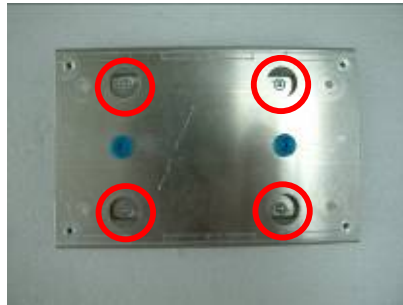
Step 1 Refer section 2.1 to open the back cover.

Step 2 Unscrew 4 screws to take off the HDD bracket.

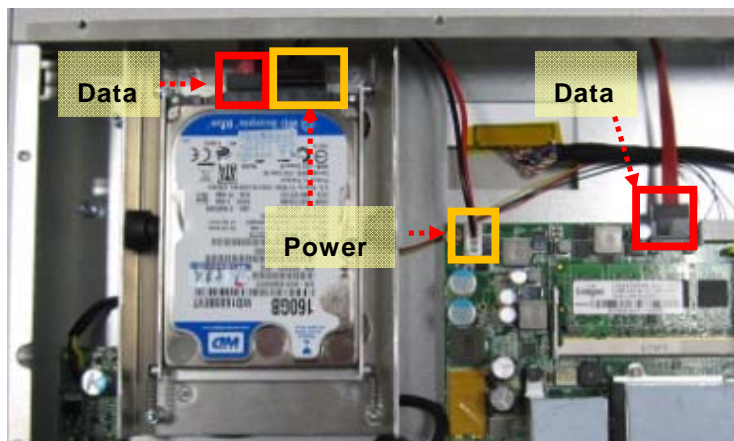


Step 3 Fix the HDD on bracket by 4 screws.





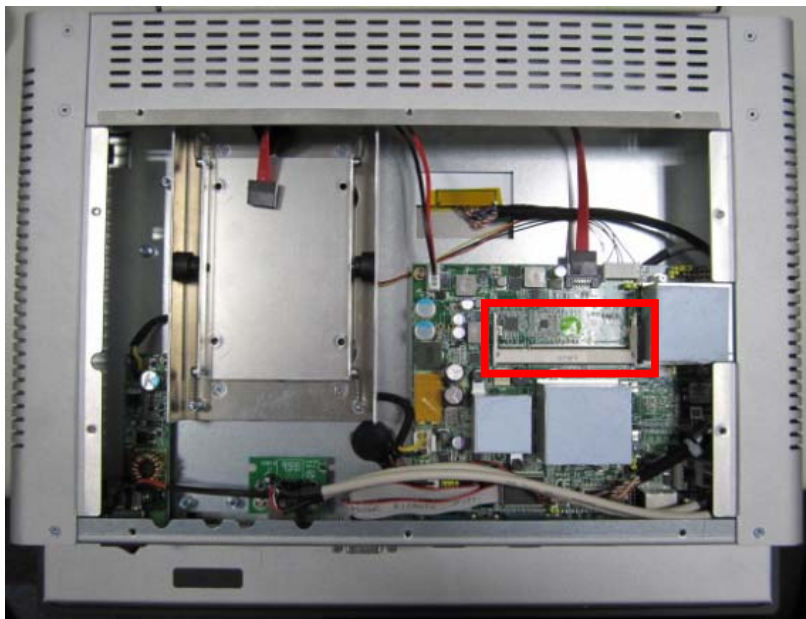
Step 4 Fix the HDD bracket into the system, and plug the data and power cable to HDD. Installation completes.



2.6 DRAM Installation

The GOT-3156TL-830 provides one 200-pin DDR2 SODIMM socket that support system memory up to 2GB. Please follow steps below to install the memory modules:

Step 1 Refer to section 2.1 to open the back cover and find out DIMM socket on mainboard (SBC87830).



Step 2 Insert the DRAM to the DIMM socket, and then push it down firmly until it is clipped by the socket.



Step 3 Installation completes.



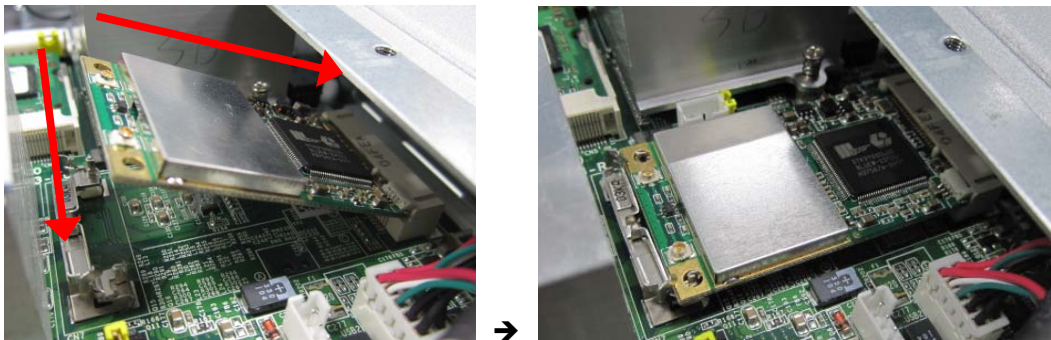
2.7 Wireless LAN Card Installation

The GOT-3156TL-830 provides one Mini card slot for user to install one wireless LAN card. When installing the wireless LAN card, refer to the following instructions and illustration:

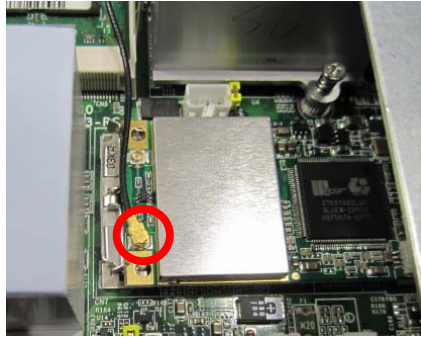
- Step 1** Refer to section 2.1 to open the back cover and find out mini-card slot on mainboard.



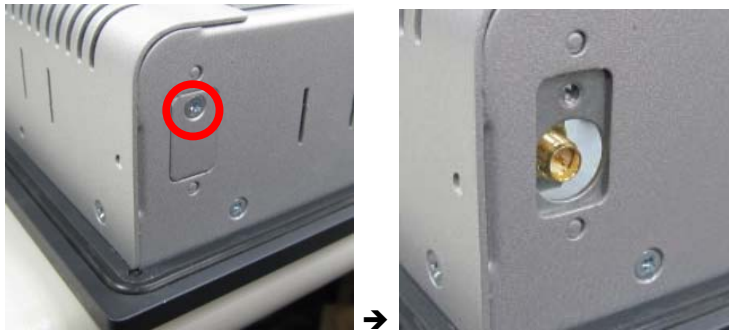
- Step 2** Insert the wireless LAN card to the slot. Push it down firmly until it is clipped by the slot.



- Step 3** Find the built-in Antenna cable and connect it wireless LAN card.



Step 4 Remove the antenna plug from the top of back cover.



Step 5 Install the antenna on the antenna connector.



2.8 Power

GOT-3126TL-830 equips with a phoenix type power connector. It adopts 12VDC or 24VDC. Please follow the signs on power connector to connect DC power source.

+: Power positive

G: Safty ground

—: Power negative



Note: The safty ground must be connected to ensure the uiit working appropriately.

MEMO

CHAPTER 3 AMI BIOS SETUP UTILITY

This chapter provides users with detailed description how to set up basic system configuration through the AMI BIOS setup utility.

3.1 Starting

To enter the setup screens, follow the steps below:

1. Turn on the computer and press the key immediately.
2. After you press the <Delete> key, the main BIOS setup menu displays. You can access the other setup screens from the main BIOS setup menu, such as the Chipset and Power menus.

3.2 Navigation Keys

The BIOS setup/utility uses a key-based navigation system called hot keys. Most of the BIOS setup utility hot keys can be used at any time during the setup navigation process.

These keys include <F1>, <F10>, <Enter>, <ESC>, <Arrow> keys, and so on.



Note Some of navigation keys differ from one screen to another.

| | |
|---------------|---|
| ← Left/Right | The Left and Right <Arrow> keys allow you to select a setup screen. |
| ↑↓ Up/Down | The Up and Down <Arrow> keys allow you to select a setup screen or sub-screen. |
| +– Plus/Minus | The Plus and Minus <Arrow> keys allow you to change the field value of a particular setup item. |
| Tab | The <Tab> key allows you to select setup fields. |
| F1 | The <F1> key allows you to display the General Help screen. |

| | |
|--------------|--|
| F10 | The <F10> key allows you to save any changes you have made and exit Setup. Press the <F10> key to save your changes. |
| Esc | The <Esc> key allows you to discard any changes you have made and exit the Setup. Press the <Esc> key to exit the setup without saving your changes. |
| Enter | The <Enter> key allows you to display or change the setup option listed for a particular setup item. The <Enter> key can also allow you to display the setup sub- screens. |

3.3 Main Menu

When you first enter the Setup Utility, you will enter the Main setup screen. You can always return to the Main setup screen by selecting the Main tab. There are two Main Setup options. They are described in this section. The Main BIOS Setup screen is shown below.

| BIOS SETUP UTILITY | |
|---|--|
| Main | Advanced PCIPnP Boot Security Chipset Exit |
| System Overview <hr/> Version : SBC87830 X006 Build Date : 06/15/09 VBIOS Version : V1.00 Processor Genuine Intel (R) CPU N270 @1.60GHz Speed :1600MHz System Memory Size : 4016MB System Time [06:27:11] System Date [Sun 02/17/2002] | Use [ENTER], [TAB] or [SHIFT-TAB] to select a field. Use [+] or [-] to configure system Time. ← Select Screen ↑↓ Select Item +− Change Field Tab Select Field F1 General Help F10 Save and Exit ESC Exit |
| v02.61 (C) Copyright 1985-2006, American Megatrends, Inc. | |

- **System Time/Date**
Use this option to change the system time and date. Highlight

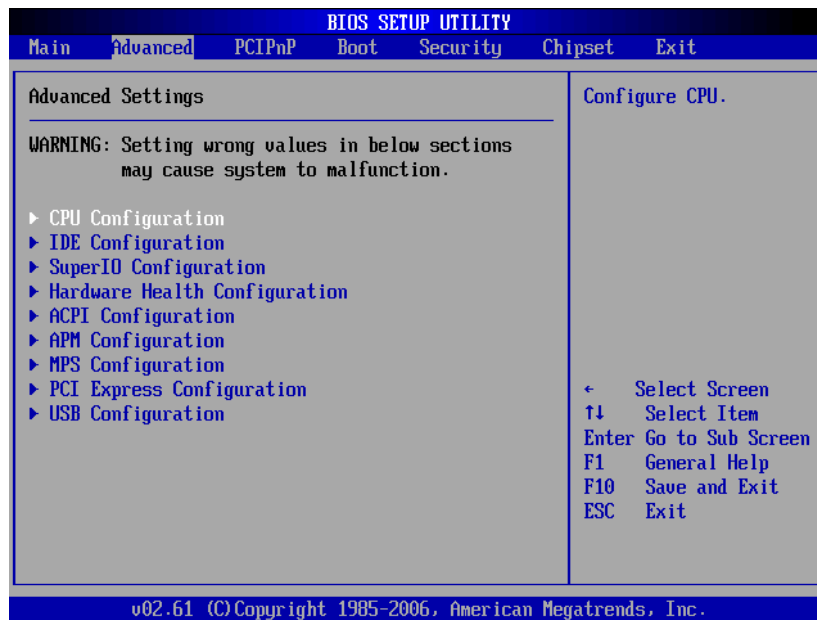
System Time or System Date using the <Arrow> keys. Enter new values through the keyboard. Press the <Tab> key or the <Arrow> keys to move between fields. The date must be entered in MM/DD/YY format. The time is entered in HH:MM:SS format.

3.4 Advanced Menu

The Advanced menu allows users to set configuration of the CPU and other system devices. You can select any of the items in the left frame of the screen to go to the sub menus:

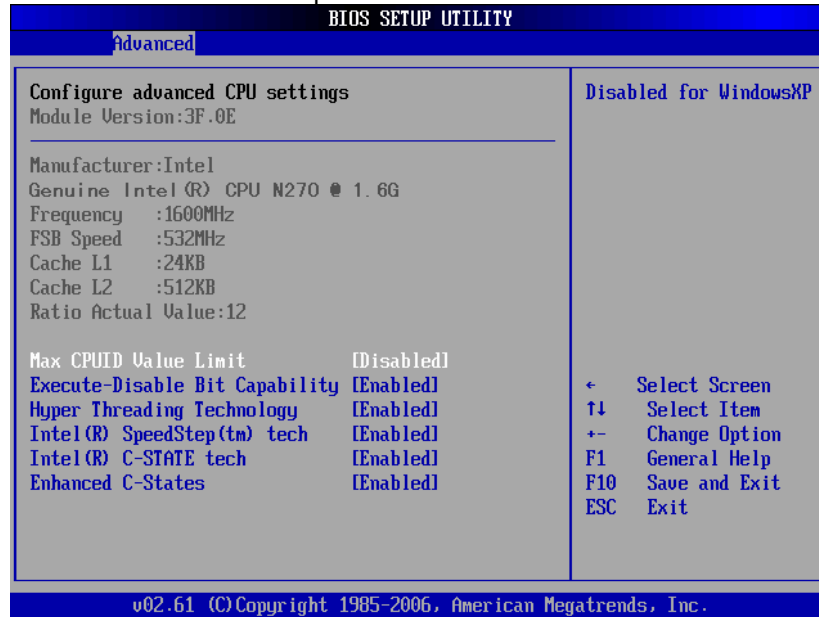
- CPU Configuration
- IDE Configuration
- SuperIO Configuration
- Hardware Health Configuration
- ACPI Configuration
- APM Configuration
- MPS Configuration
- PCI Express Configuration
- USB Configuration

For items marked with “▶”, please press <Enter> for more options.



- **Configure advanced CPU settings**

This screen shows the CPU Configuration, and you can change the value of the selected option.



- **Max CPUID Value Limit**

You can enable this item to let legacy operating systems boot even without support for CPUs with extended CPU ID functions.

- **Execute-Disable Bit Capability**

This item helps you enable or disable the No-Execution Page Protection Technology.

- **Hyper Threading Technology**

Use this item to enable or disable Hyper-Threading Technology, which makes a single physical processor perform multi-tasking function as two logical ones.

- **Intel (R) SpeedStep (tm) tech**

This item helps you enable or disable the Intel SpeedStep Technology.

- **Intel (R) C-STATE tech**

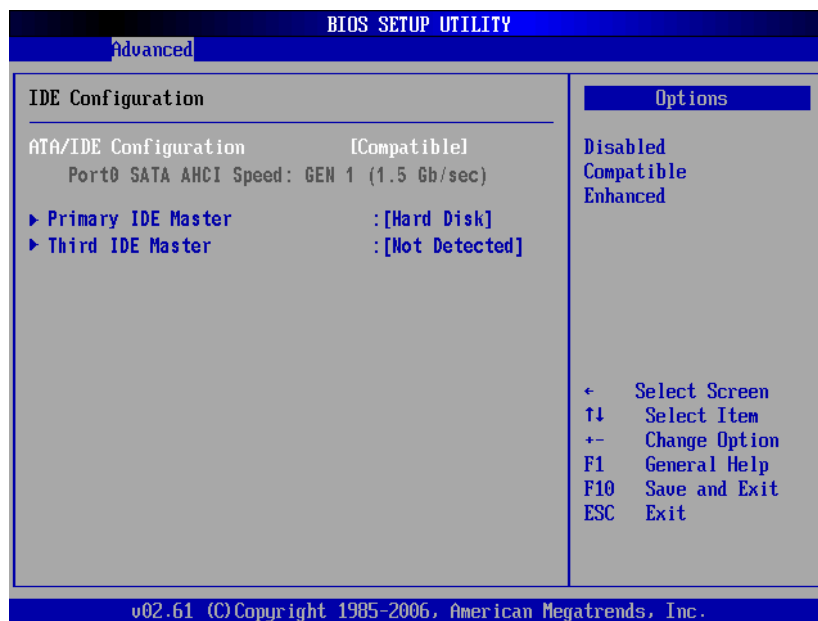
Use this item to enable or disable the C-State technology.

➤ **Enhanced C-States**

This item allows you to enable or disable any available enhanced C-states (C1E, C2E, C3E, C4E and Hard C4E).

● **IDE Configuration**

You can use this screen to select options for the IDE Configuration, and change the value of the selected option. A description of the selected item appears on the right side of the screen. For items marked with "▶", please press <Enter> for more options.



➤ **ATA/IDE Configuration**

Use this item to specify the integrated IDE controller. There are three options for your selection: *Disabled*, *Compatible* and *Enhanced*.

➤ **Legacy IDE Channels**

When the ATA/IDE Configuration is set to *Compatible*, this item will be displayed.

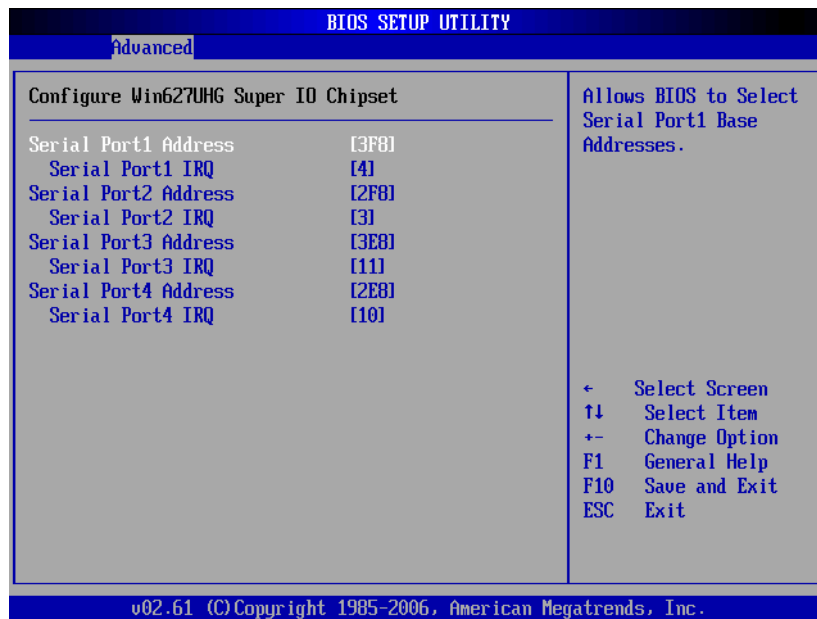
➤ **Primary/Secondary/Third IDE Master/Slave**

Select one of the hard disk drives to configure IDE devices

installed in the system by pressing <Enter> for more options.

● **SuperIO Configuration**

You can use this screen to select options for the SuperIO Configuration, and change the value of the selected option. A description of the selected item appears on the right side of the screen.



➤ **Serial Port1 Address**

This item specifies the base I/O port address and Interrupt Request address of serial port 1. The Optimal setting is 3F8/IRQ4. The Fail-Safe default setting is 3F8.

➤ **Serial Port1 IRQ**

This item specifies the IRQ used by the serial port 1.

➤ **Serial Port2 Address**

This item specifies the base I/O port address and Interrupt Request address of serial port 2. The Optimal setting is 2F8/IRQ3. The Fail-Safe setting is 2F8.

➤ **Serial Port2 IRQ**

This item specifies the IRQ used by the serial port 2.

➤ **Serial Port3 Address**

This item specifies the base I/O port address and Interrupt Request address of serial port 3.

➤ **Serial Port3 IRQ**

This item specifies the IRQ used by the serial port 3.

➤ **Serial Port4 Address**

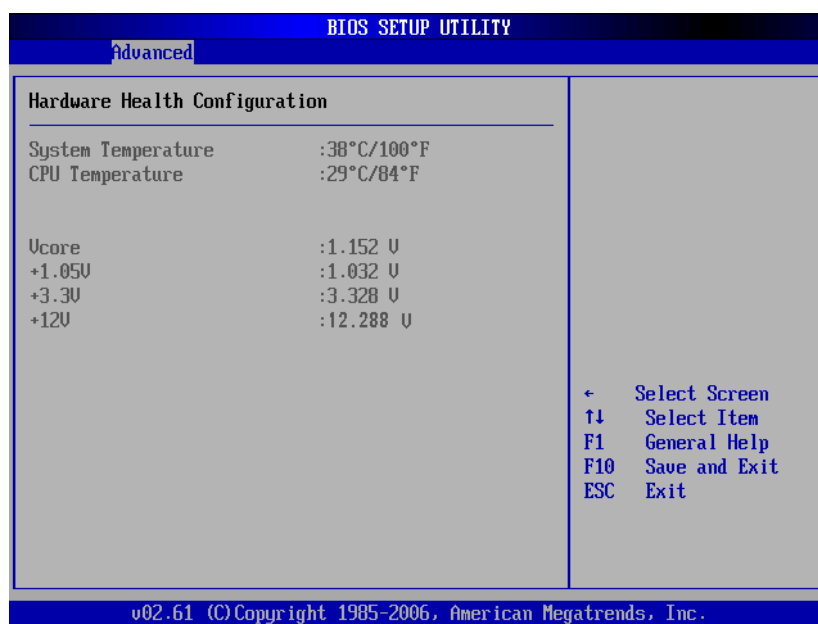
This item specifies the base I/O port address and Interrupt Request address of serial port 4.

➤ **Serial Port4 IRQ**

This item specifies the IRQ used by the serial port 4.

- **Hardware Health Configuration**

This screen shows the Hardware Health Configuration, and a description of the selected item appears on the right side of the screen.

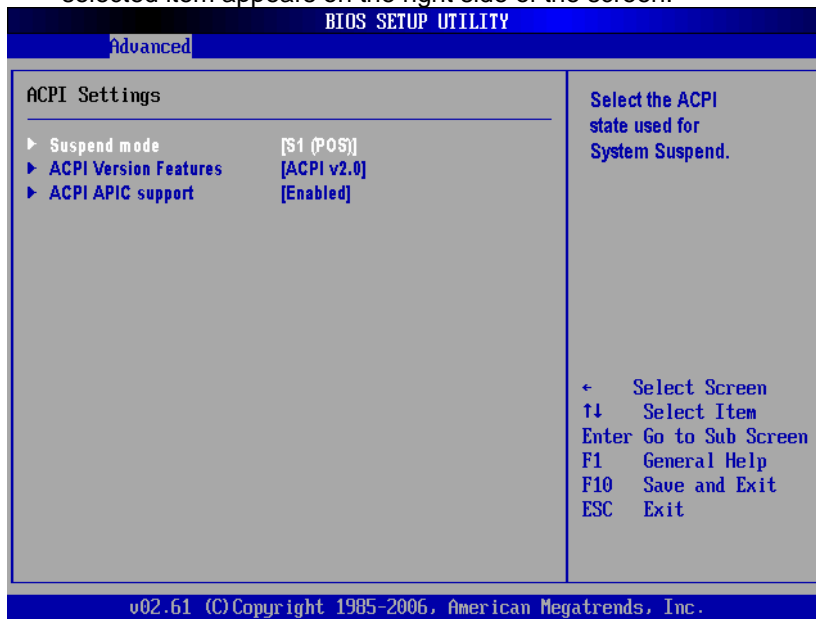


- **System Temperature/CPU Temperature**

These items display the temperature of CPU and System, Vcore, etc.

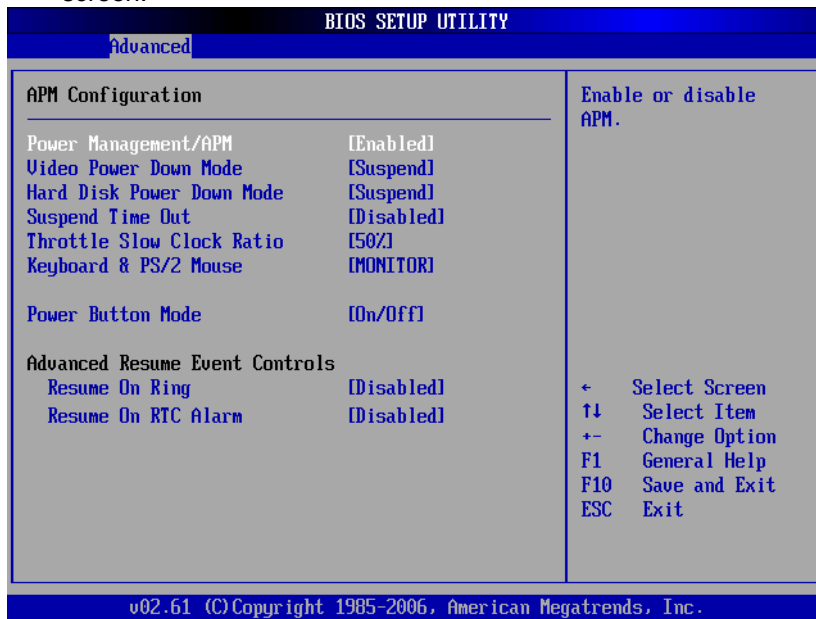
- **ACPI Settings**

You can use this screen to select options for the ACPI Settings, and change the value of the selected option. A description of the selected item appears on the right side of the screen.



- **APM Configuration**

You can use this screen to select options for the APM Configuration, and change the value of the selected option. A description of the selected item appears on the right side of the screen.



- **Power Management/APM**

Set this item to allow Power Management/APM support. The default setting is *Enabled*.

| | |
|-----------------|--|
| Disabled | Set this item to prevent the chipset power management and APM (Advanced Power Management) features. |
| Enabled | Set this item to allow the chipset power management and APM (Advanced Power Management) features. This is the default setting. |

- **Video Power Down Mode**

This option specifies the Power State that the video subsystem enters when the BIOS places it in a power saving state after the specified period of display inactivity has

expired. The default setting is *Suspend*.

| | |
|-----------------|---|
| Disabled | This setting prevents the BIOS from initiating any power saving modes concerned with the video display or monitor. |
| Suspend | This option places the monitor into suspend mode after the specified period of display inactivity has expired. This means the monitor is not off. The screen will appear blacked out. The standards do not cite specific power ratings because they vary from monitor to monitor, but this setting use less power than Standby mode. This is the default setting. |

➤ **Hard Disk Drive Power Down Mode**

This option specifies the power conserving state that the hard disk drive enters after the specified period of hard drive inactivity has expired. The default setting is *Suspend*.

| | |
|-----------------|--|
| Disabled | This setting prevents hard disk drive power down mode. |
| Suspend | This option cuts the power to the hard disk drives during a system suspend. This is the default setting. |

➤ **Suspend Time Out (Minute)**

This option specifies the length of time the system waits before it enters suspend mode. The default setting is *Disabled*.

| | |
|-----------------|---|
| Disabled | This setting prevents the system from entering suspend mode. This is the default setting. |
| 1 Min | Set this item to allow the computer system to enter suspend mode after being inactive for 1 minute. |
| 4 Min | Set this item to allow the computer system to enter suspend mode after being inactive for 4 minutes. |
| 10 Min | Set this item to allow the computer system to enter suspend mode after being inactive for 10 minutes. |

➤ **Throttle Slow Clock Ratio**

Use this item to specify the speed of the system clock when running the power saving states.

➤ **Power Button Mode**

This option specifies how the externally mounted power button on the front of the computer chassis is used. The

default setting is *On/Off*.

| | |
|----------------|--|
| On/Off | Pushing the power button turns the computer on or off. This is the default setting. This is the default setting. |
| Suspend | Pushing the power button places the computer in Suspend mode or Full On power mode. |

***** Advanced Resume Event Controls *****

➤ **Resume On Ring**

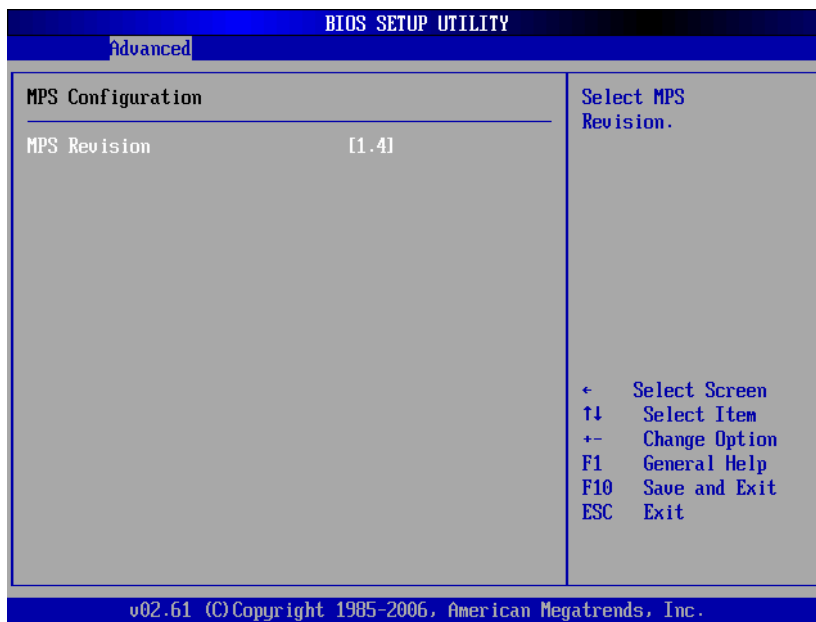
This item enables or disables the function of Resume On Ring that resumes the system through incoming calls.

➤ **Resume On RTC Alarm**

You can set "Resume On RTC Alarm" item to enabled and key in Data/time to power on system.

- **MPS Configuration**

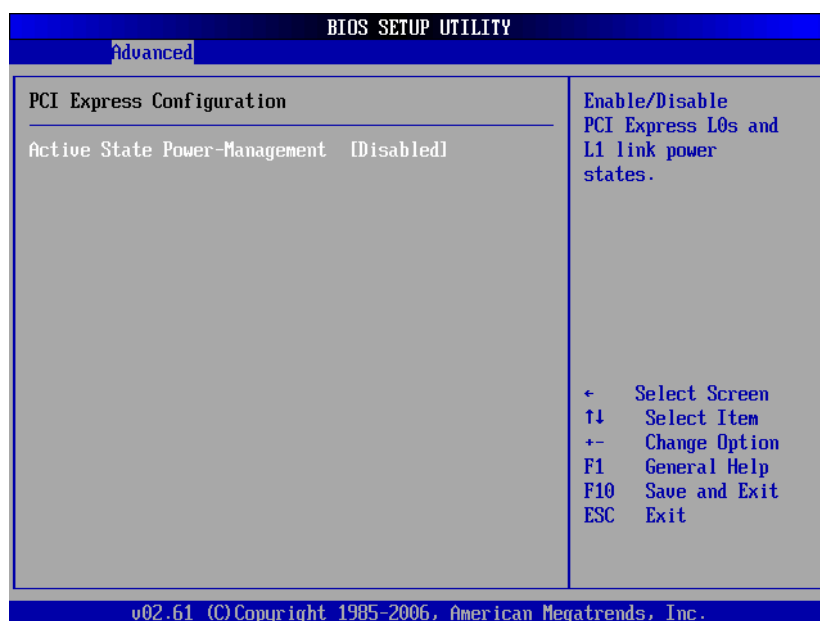
This screen shows the MPS (Multi Processor Specification) Configuration, and you can change its value. A description of the selected item appears on the right side of the screen.



- **MPS Revision**

Use this item to select MPS (Multi Processor Specification) Revision 1.1 or 1.4. The default setting is 1.4.

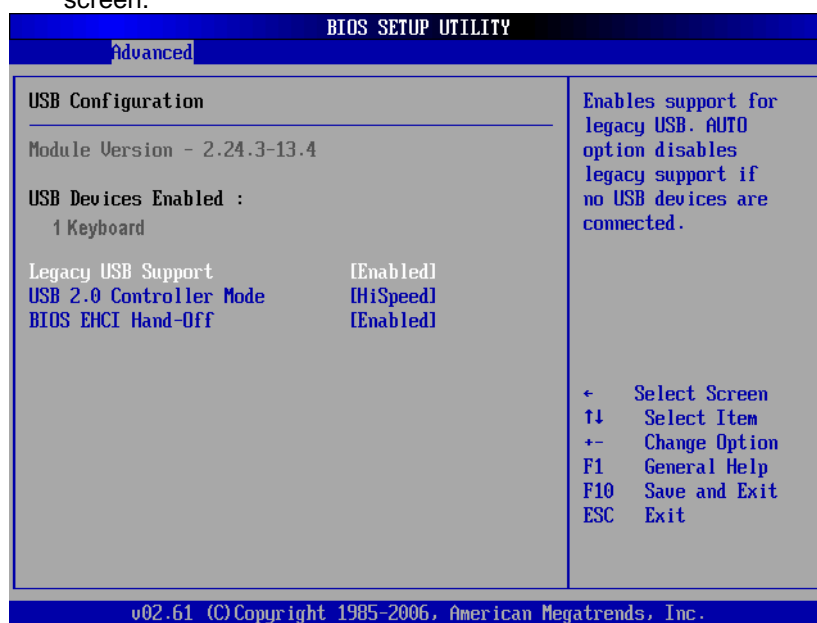
- **PCI Express Configuration**
This screen shows the PCI Express Configuration, and you can change its value. A description of the selected item appears on the right side of the screen.



- **Active State Power-Management**
Use this item to enable or disable the function of Active State Power-Management to provide you with lower power consumption. The default setting is *Disabled*.

- **USB Configuration**

You can use this screen to select options for the USB Configuration, and change the value of the selected option. A description of the selected item appears on the right side of the screen.



- **Legacy USB Support**

Use this item to enable or disable support for USB device on legacy operating system. The default setting is *Enabled*.

- **USB 2.0 Controller Mode**

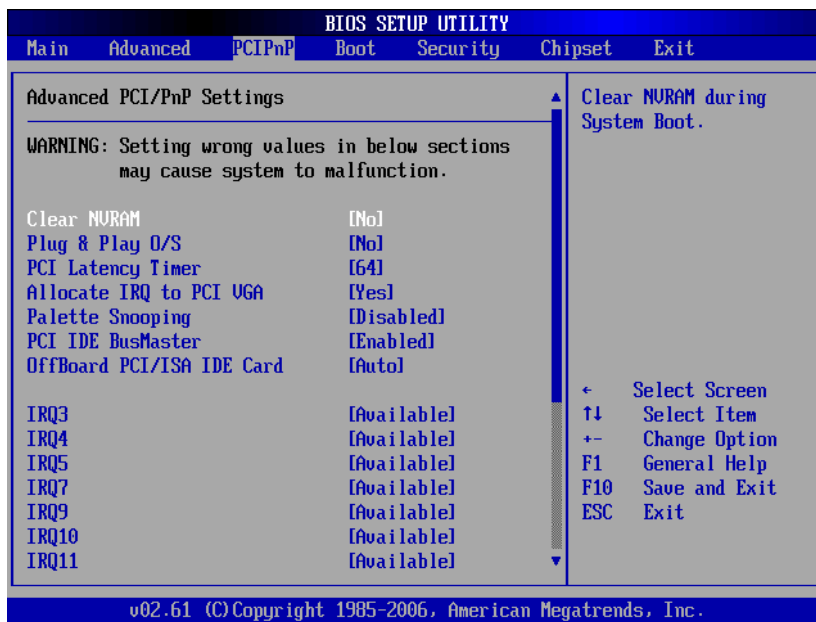
Use this item to configure the USB 2.0 controller. The default setting is *HiSpeed*.

- **BIOS EHCI Hand-Off**

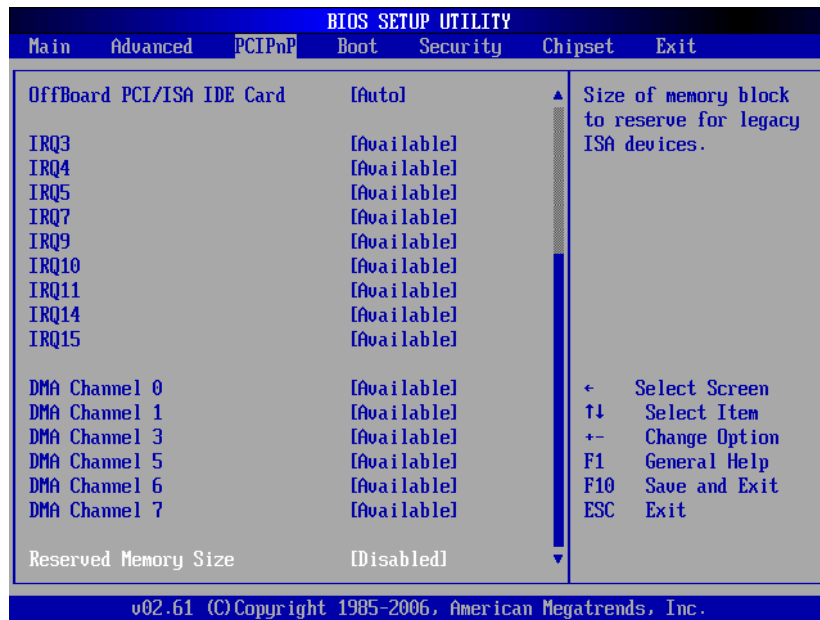
Enabling this item provide the support for operating systems without an EHCI hand-off feature. The default setting is *Enabled*.

3.5 PCI PnP Menu

The PCI PnP menu allows users to change the advanced settings for PCI/PnP devices.



(1)



(2)

➤ **Clear NVRAM**

Use this item to clear the data in the NVRAM (CMOS). Here are the options for your selection, *No* and *Yes*.

➤ **Plug & Play O/S**

When the setting is *No*, Use this item to configure all the devices in the system. When the setting is *Yes* and if you install a Plug and Play operating system, the operating system configures the Plug and Play devices not required for boot. The default setting is *No*.

➤ **PCI Latency Timer**

This item controls how long a PCI device can hold the PCI bus before another takes over. The longer the latency, the longer the PCI device can retain control of the bus before handing it over to another PCI device. There are several options for your selection.

➤ **Allocate IRQ to PCI VGA**

This item allows BIOS to choose an IRQ to assign for the PCI VGA card. Here are the options for your selection, *No*

and Yes.

➤ **Palette Snooping**

Some old graphic controllers need to “snoop” on the VGA palette, and then map it to their display as a way to provide boot information and VGA compatibility. This item allows such snooping to take place. Here are the options for your selection, *Disabled* and *Enabled*.

➤ **PCI IDE BusMaster**

This item is a toggle for the built-in driver that allows the onboard IDE controller to perform DMA (Direct Memory Access) transfer. Here are the options for your selection, *Disabled* and *Enabled*.

➤ **OffBoard PCI/ISA IDE Card**

This item is for any other non-onboard PCI/ISA IDE controller adapter. There are several options for your selection.

➤ **IRQ3/4/5/7/9/10/11/14/15**

These items will allow you to assign each system interrupt a type, depending on the type of device using the interrupt. The option “Available” means the IRQ is going to assign automatically. Here are the options for your selection, *Available* and *Reserved*.

➤ **DMA Channel 0/1/3/5/6/7**

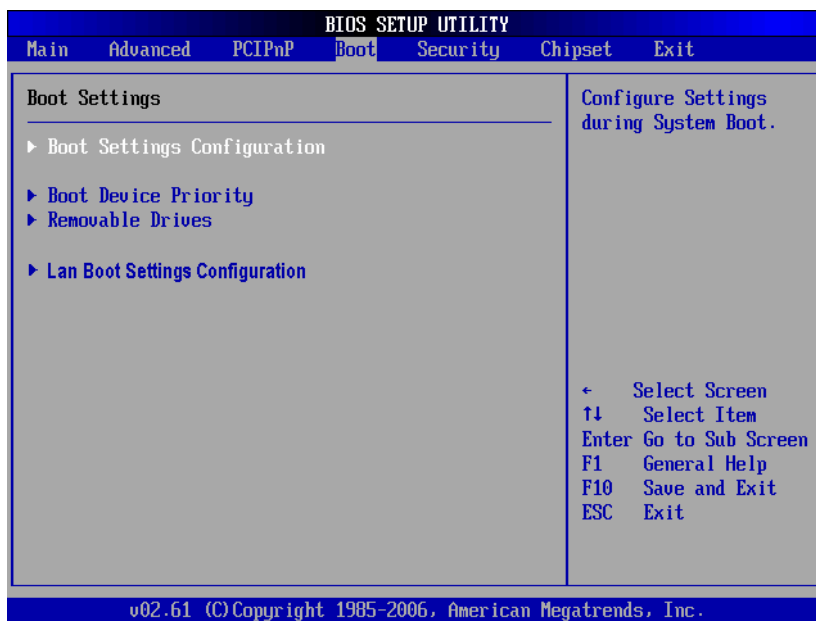
These items will allow you to assign each DMA channel a type, depending on the type of device using the channel. The option “Available” means the channel is going to assign automatically. Here are the options for your selection, *Available* and *Reserved*.

3.6 Boot Menu

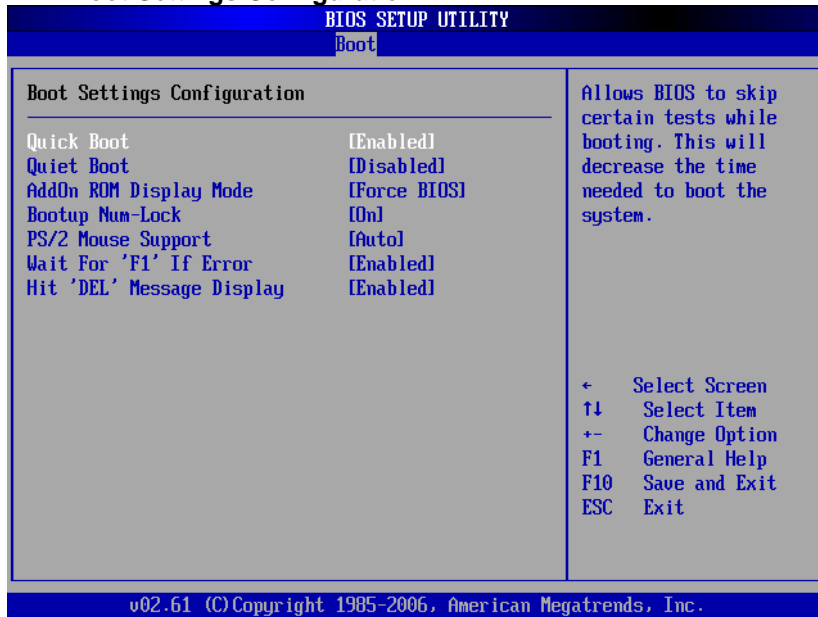
The Boot menu allows users to change boot options of the system. You can select any of the items in the left frame of the screen to go to the sub menus:

- Boot Settings Configuration
- Boot Device Priority
- Removable Drives
- Lan Boot Settings Configuration

For items marked with “▶”, please press <Enter> for more options.



● **Boot Settings Configuration**



➤ **Quick Boot**

Enabling this item lets the BIOS skip some power on self tests (POST). The default setting is *Enabled*.

➤ **Quiet Boot**

| | |
|-----------------|--|
| Disabled | Set this item to allow the computer system to display the POST messages. |
| Enabled | Set this item to allow the computer system to display the OEM logo. This is the default setting. |

➤ **AddOn ROM Display Mode**

This item selects the display mode for option ROM. The default setting is *Force BIOS*.

➤ **Boot Num-Lock**

Use this item to select the power-on state for the NumLock. The default setting is *On*.

➤ **PS/2 Mouse Support**

This item determines if the BIOS should reserve IRQ12 for the PS/2 mouse or allow other devices to make use of this

IRQ. Here are the options for your selection, *Auto*, *Enabled* and *Disabled*.

➤ **Wait For 'F1' If Error**

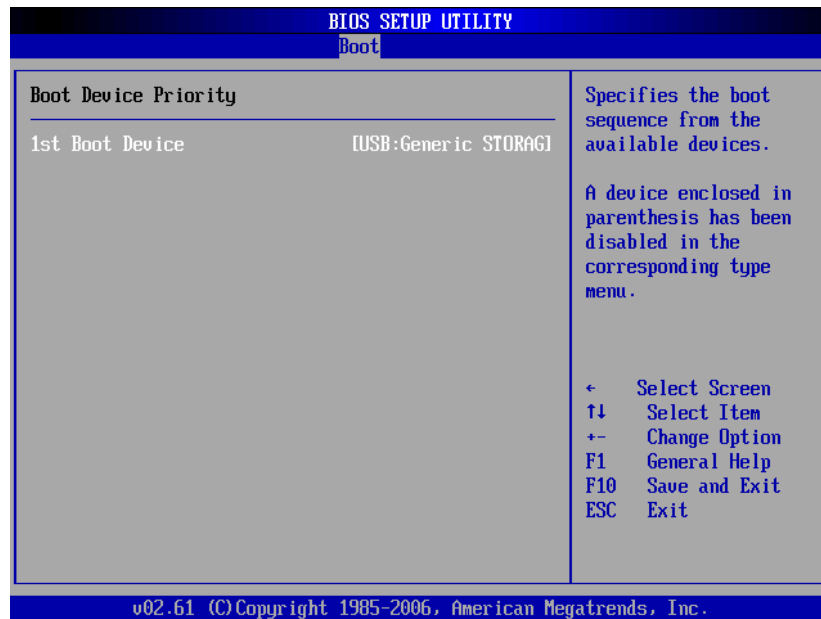
If this item is enabled, the system waits for the F1 key to be pressed when error occurs. The default setting is *Enabled*.

➤ **Hit 'DEL' Message Display**

If this item is enabled, the system displays the message "Press DEL to run Setup" during POST. The default setting is *Enabled*.

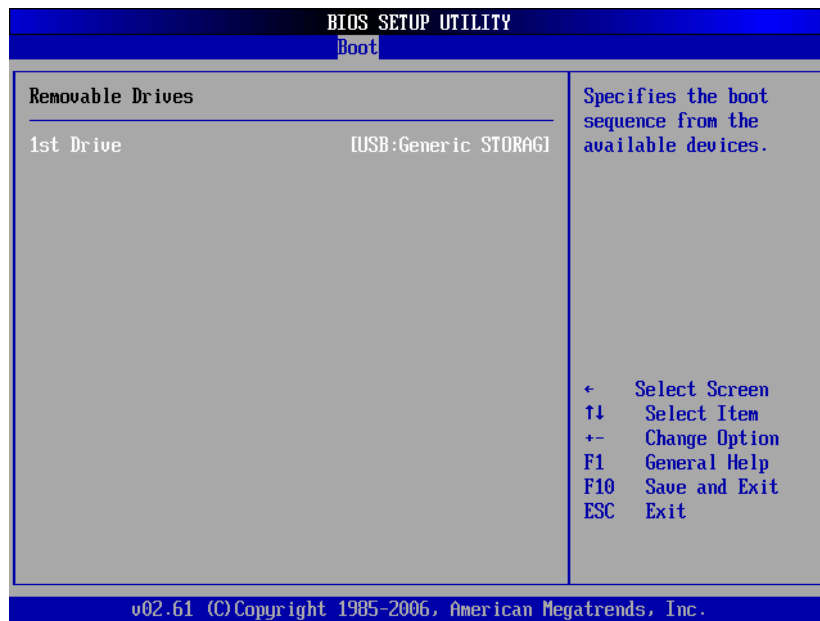
● **Boot Device Priority**

The Boot Device Priority screen specifies the the boot device priority sequence from the available devices.



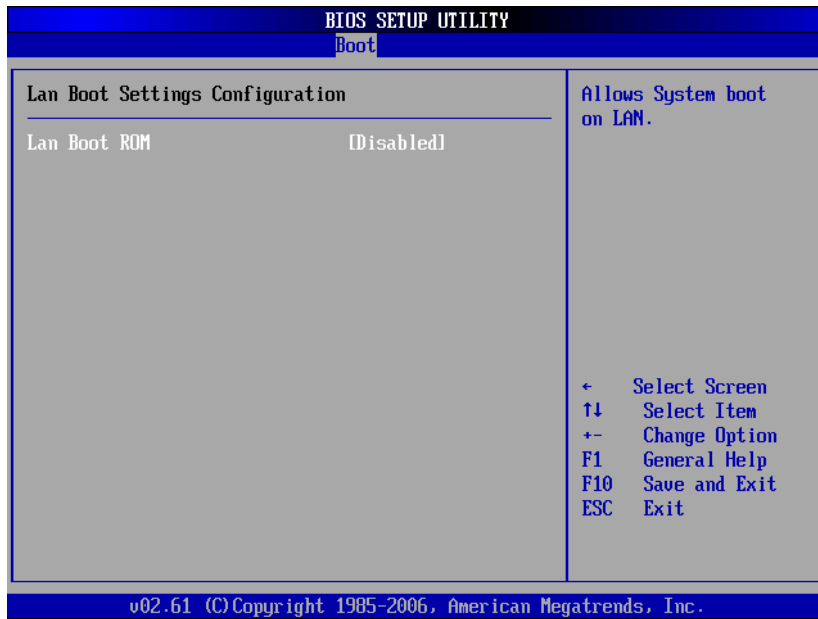
- **Removable Drives**

Use this screen to view the removable drives in the system. The BIOS will attempt to arrange the removable drive boot sequence automatically. You can also change the booting sequence.



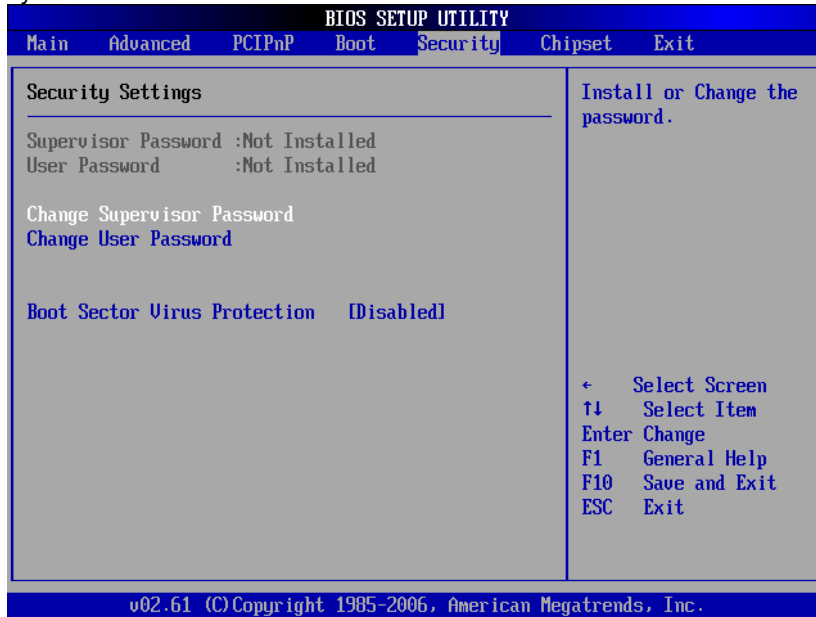
- **Lan Boot Settings Configuration**

The Lan Boot Settings Configuration can enable or disable Lan Boot ROM to allow the system boot on LAN.



3.7 Security Menu

The Security menu allows users to change the security settings for the system.



➤ **Supervisor Password**

This item indicates whether a supervisor password has been set. If the password has been installed, Installed displays. If not, Not Installed displays.

➤ **User Password**

This item indicates whether a user password has been set. If the password has been installed, Installed displays. If not, Not Installed displays.

➤ **Change Supervisor Password**

Select this option and press <Enter> to access the sub menu. You can use the sub menu to change the supervisor password.

➤ **Change User Password**

Select this option and press <Enter> to access the sub

menu. You can use the sub menu to change the user password.

➤ **Boot Sector Virus Protection**

This option is near the bottom of the Security Setup screen. The default setting is *Disabled*.

| | |
|-----------------|--|
| Disabled | Set this item to prevent the Boot Sector Virus Protection. This is the default setting. |
| Enabled | Select Enabled to enable boot sector protection. It displays a warning when any program (or virus) issues a Disk Format command or attempts to write to the boot sector of the hard disk drive. If enabled, the following appears when a write is attempted to the boot sector. You may have to type N several times to prevent the boot sector write. Boot Sector Write! Possible VIRUS: Continue (Y/N)? _ The following appears after any attempt to format any cylinder, head, or sector of any hard disk drive via the BIOS INT 13 Hard disk drive Service: Format!!! Possible VIRUS: Continue (Y/N)? |

3.8 Chipset Menu

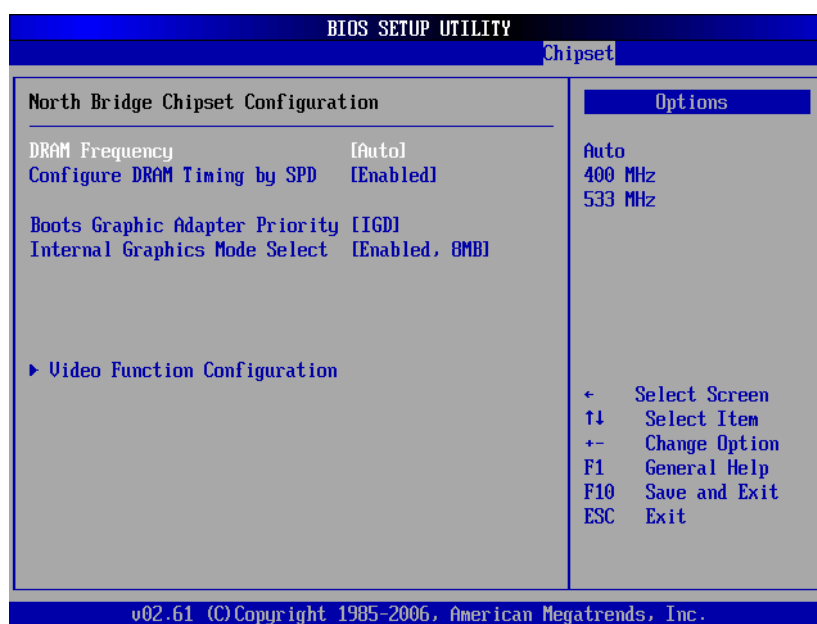
The Chipset menu allows users to change the advanced chipset settings. You can select any of the items in the left frame of the screen to go to the sub menus:

- North Bridge Configuration
- South Bridge Configuration

For items marked with “▶”, please press <Enter> for more options.



- **North Bridge Configuration**



- **DRAM Frequency**

This item allows you to control the Memory Clock.

- **Configure DRAM Timing by SPD**

This item can enable or disable DRAM timing by SPD (Serial Presence Detect) device, which is a small EEPROM chip on the memory module, containing important information about the module speed, size, addressing mode and various parameters.

- **Boot Graphic Adapter Priority**

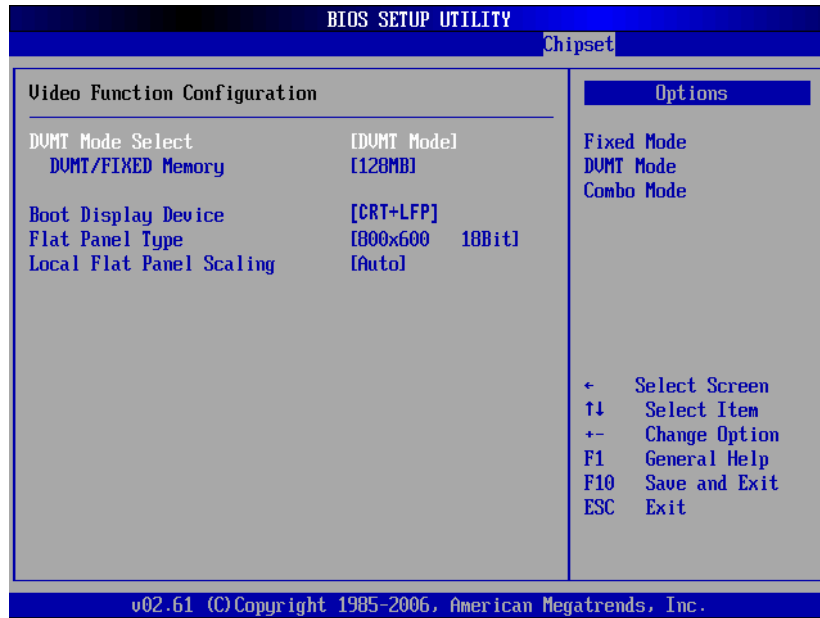
This item allows you to select the graphics controller as the primary boot device.

- **Internal Graphics Mode Select**

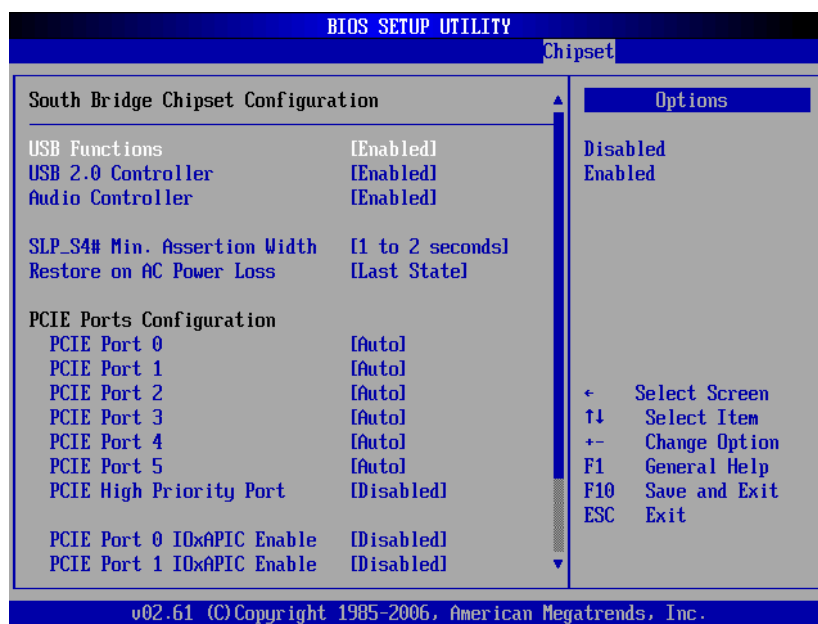
This item allows you to select the amount of system memory used by the internal graphics device.

- **Video Function Configuration**

Press <Enter> for the sub-menu for setting up video function.



● South Bridge Configuration



(1)



(2)

- **USB Function**

This item allows you to enable or disable USB function.

- **USB 2.0 Controller**

This item allows you to enable or disable the USB 2.0 controller.

- **Audio Controller**

This item allows you to enable or disable the audio support.

- **SLP_S4# Min. Assertion Width**

This item allows you to set the SLP_S4# Assertion Width.

- **Restore on AC Power Loss**

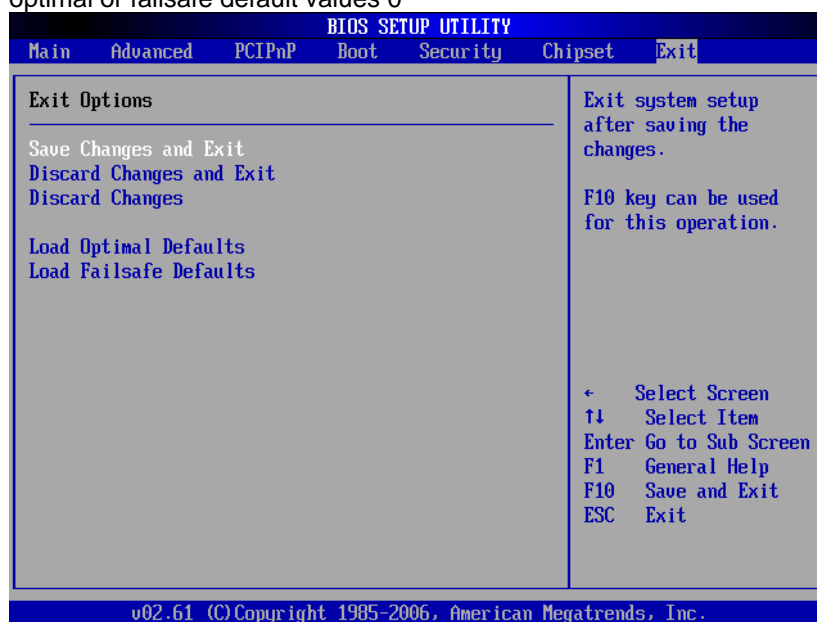
This item can control how the PC will behave once power is restored following a power outage, or other unexpected shutdown.

- **PCIE Port Configuration**

This item allows you to set or disable the PCI Express Ports.

3.9 Exit Menu

The Exit menu allows users to load your system configuration with optimal or failsafe default values 0



➤ **Save Changes and Exit**

When you have completed the system configuration changes, select this option to leave Setup and reboot the computer so the new system configuration parameters can take effect. Select *Save Changes and Exit* from the Exit menu and press <Enter>. Select Ok to save changes and exit.

➤ **Discard Changes and Exit**

Select this option to quit Setup without making any permanent changes to the system configuration. Select *Discard Changes and Exit* from the Exit menu and press <Enter>. Select Ok to discard changes and exit.

➤ **Discard Changes**

Use this item to abandon all changes.

➤ **Load Optimal Defaults**

It automatically sets all Setup options to a complete set of default settings when you select this option. The Optimal settings are designed for maximum system performance, but may not work best for all computer applications. In particular, do not use the Optimal Setup options if your computer is experiencing system configuration problems. Select Load Optimal Defaults from the Exit menu and press <Enter>.

➤ **Load Fail-Safe Defaults**

It automatically sets all Setup options to a complete set of default settings when you select this option. The Fail-Safe settings are designed for maximum system stability, but not maximum performance. Select the Fail-Safe Setup options if your computer is experiencing system configuration problems.

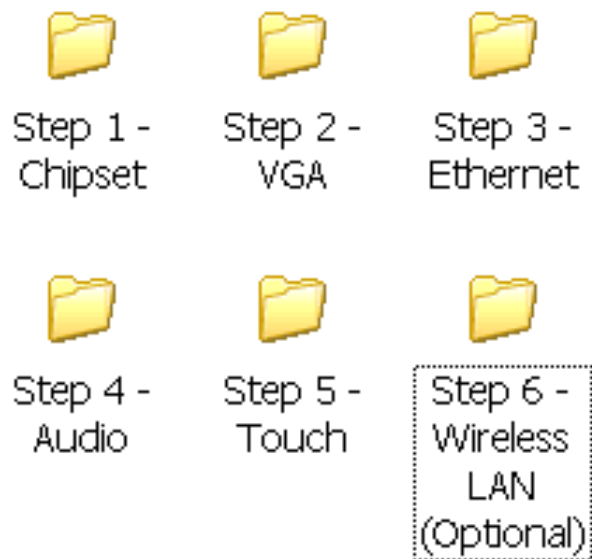
Select Load Fail-Safe Defaults from the Exit menu and press <Enter>. Select Ok to load Fail-Safe defaults.

CHAPTER 4 DRIVERS INSTALLATION

4.1 System

GOT-3156TL-830 supports Windows XP. To facilitate the installation of system driver, please carefully read the instructions in this chapter before start installing.

1. Insert Driver CD and select the “\Drivers”.



2. Select all files and follow the installing procedure.

4.2 Touch Screen

The GOT-3156TL-830 uses the 5-wire analog resistive. There are the specification and driver installation which are listed below.

4.2.1 Specification

| | |
|--------------------------------|---|
| Touch Screen | 5-wire Analog Resistive type |
| Touch Screen Controller | PenMount 6000 USB Touch Screen Controller IC |
| Communications | USB interface |
| Baud Rate | 19200 baud rate fixed |
| Resolution | 1024 x 1024 (10 bit A/D converter inside) |
| Power Input | 5V |
| Power Consumption | Active: 24.6mA / Idle Mode: 13.4mA |

4.2.2 Driver Installation- Windows XP

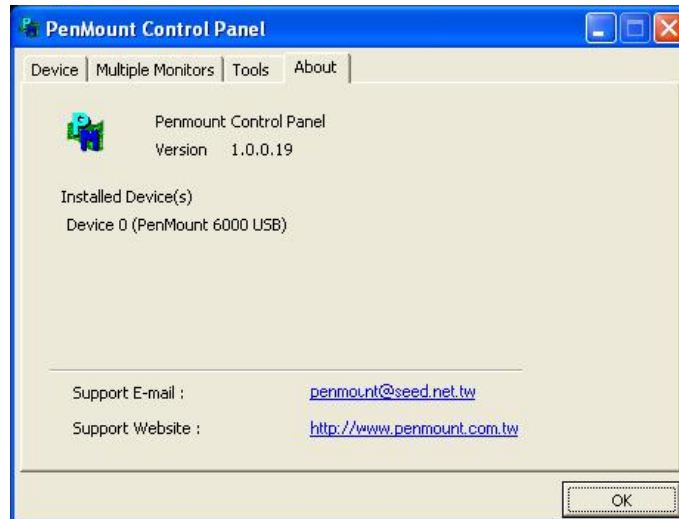
The GOT-3156TL-830 provides a touch screen driver that users can install it under the operating system Windows XP. To facilitate installation of the touch screen driver, you should read the instructions in this chapter carefully before you attempt installation.

1. Insert Driver CD and follow the path to select the “\Drivers\Step 5 - Touch”.



2. Follow the installing procedure and press OK.

3. Click Start menu and select "PenMount Utilities"; and then, a "PenMount Control Panel" pops out.

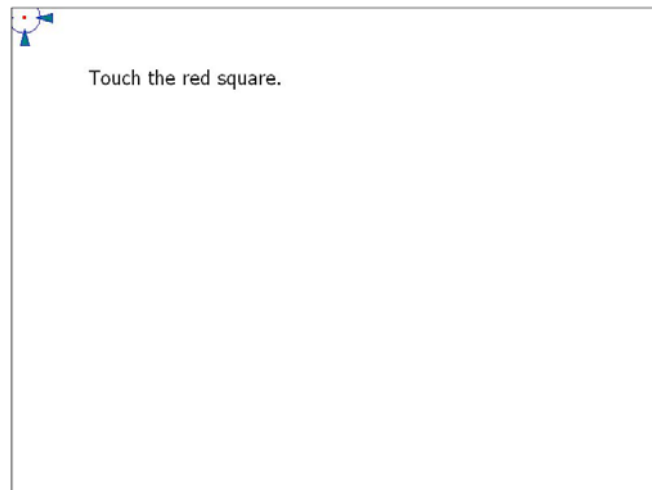


4. Select the "Standard Calibrate" tab.



5. Calibration:

To adjust the display with touch panel, click "Calibration" and follow the calibrate point to do calibration; there are five points on screen for calibration.



6. Press OK.

4.3 Embedded O.S.

The GOT-3156TL-830 provides the Windows XP Embedded and Windows CE.Net 6.0. The O.S. is supported devices which are listed below.

4.3.1 Windows XP Embedded

Here are supported onboard devices:

- Onboard Multi I/O
- SATA HDD
- USB
- PS2 Keyboard and mouse
- CRT/LCD display
- 10/100/1000 base-T Ethernet
- Compact Flash
- Onboard Audio
- Touch Screen

PenMount Touch screen

Before you can use and calibrate it, here is what you should do:

1. Set up Penmount touch device driver by executing C:\Penmount\ Windows 2000-XP V5.0\setup.exe. When the installation is finished, an icon "PM" appears on the Taskbar.
2. Calibrate Penmount touch by clicking on the "PM" icon, and the go on the calibration
3. Restart the computer.